

ENG  
BOOK

# Owner's Manual

Set 2

Work Number: 785477  
Customer Project: 2371166  
Customer Ref: B3409A2  
Chain Number: B3409A2  
Project: Toyota Cosel - Gofse

## Certificates

DCON1266414

CERTIFICATE

PS00334  
DCON1255073

CERTIFICATE

PS06534

Certificates



ENG  
0001

# Owner's Manual

Set 2

WorkNumber: 735477  
CustomerProject: 2374166  
CustomerRef: B3409A2  
CraneNumber: B3409A2  
Project: Toyota Gosef - Oase

## Certificates

DCON1255414

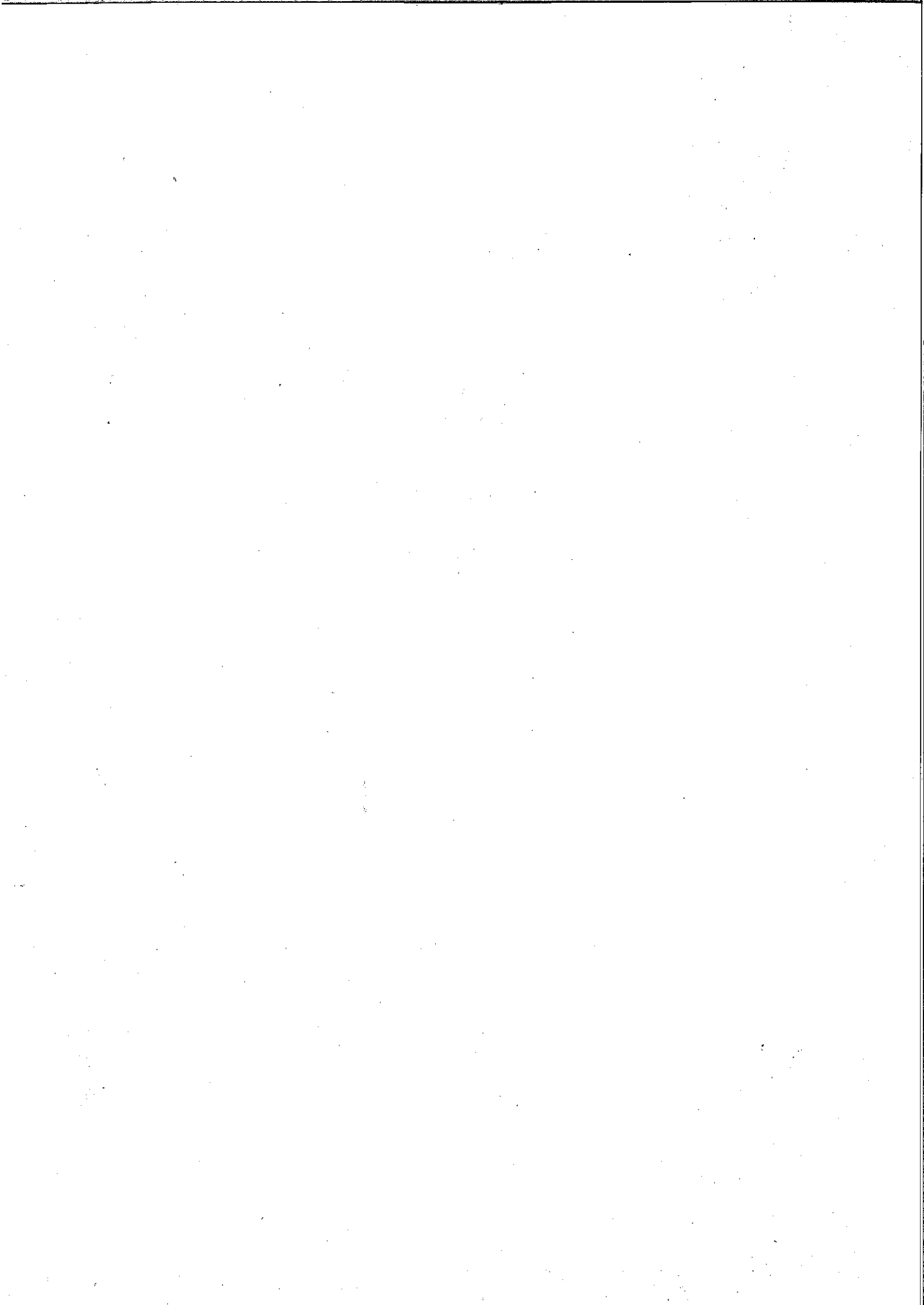
CERTIFICATE

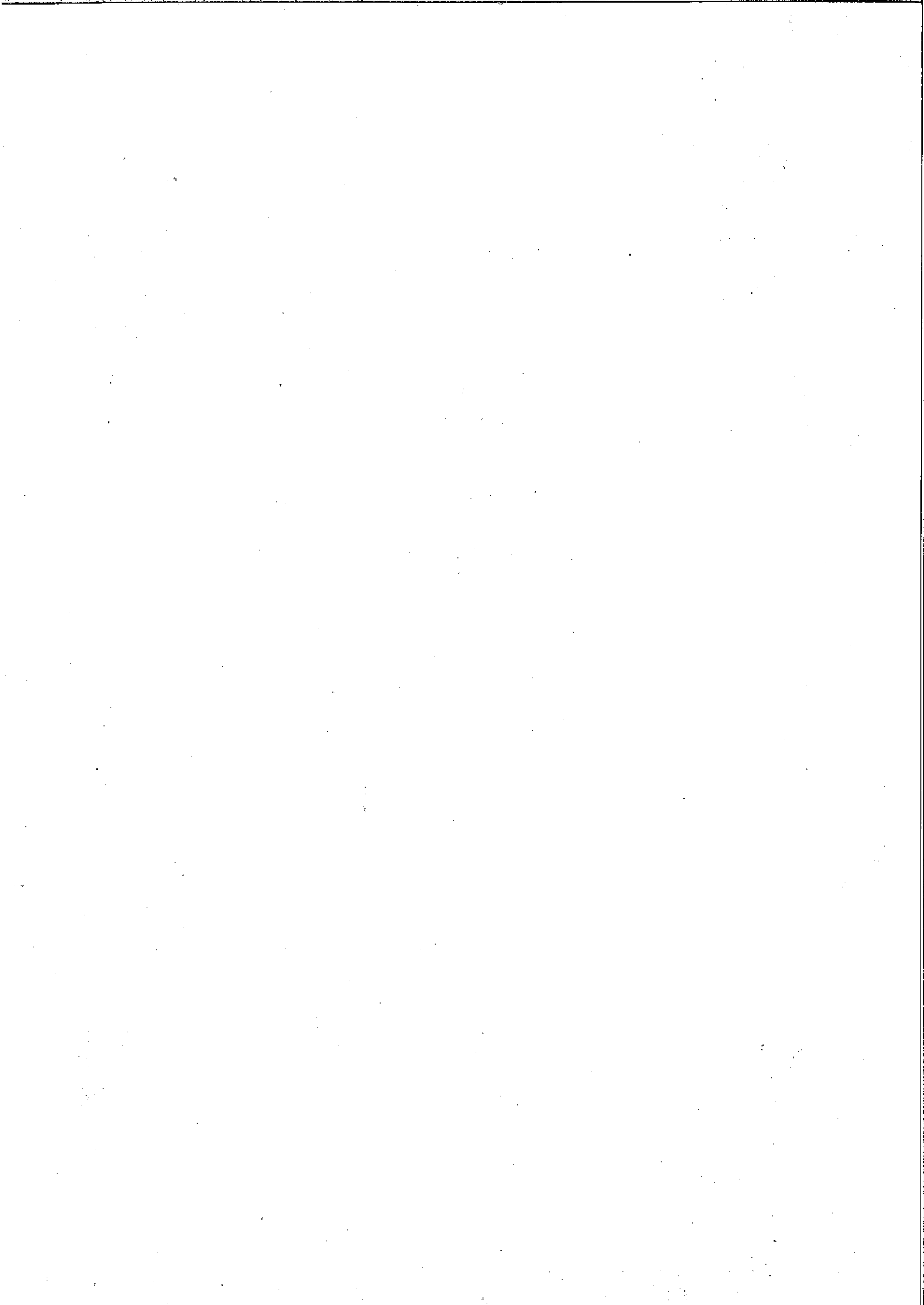
PS00504  
DCON1255673

CERTIFICATE

RS00534

Certificates





## Hoist Test Certificate

### Rereferences

Manufacturer No.	785477/5	Job number	B3409A2
------------------	----------	------------	---------

### Hoist

Type of hoist	CXT60610250P65EDMAS		
Serial number of the hoist	HKY78671	Load	25000 KG
Height of lift	7 M	Drum load	-
Rope stroke	-	Duty class	M5
Total current	32 A	Total power	15 kW

### Hoisting machinery

Hoisting motor type	MF13Z-106N172P85061N-IP55		
Serial number	1585576	Power (kW)	15/2.5
Gear type	GEN404NB000-D	Hoisting speed	2.5/0.42 MMIN
Serial number	70575145	Rope speed	-/-

### Controls

Main voltage	415 V	Frequency	50 HZ
Control voltage	48 V	Serial number	
Control type	2SP	Overload device	SG
Pendant cable	-	Adjusted load	27500 KG
Wiring diagram			
Wiring standard	IEC		

### Trolley

Travelling motor type			
Serial number			
Gear type			
Serial number			
Power (kW)	1.1/	Rail gauge	2000 MM
Trolley type	MA	Wheel groove	65 MM
B-measure nom.	-	Inverter Serial no	
Trolley speed	20 MMIN		

### Factory tests

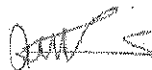
Number of starts 22  
**Test run with 100% load.**  
**Dynamic overload test, 125% load.**  
**10% under voltagetest, 100% load.**  
**Overload set at 110% load.**

### Note

Currents on motor type plate are according to ISO/FEM M5.

Konecranes Finland Corp.

12.10.2010



Tommi Kukkurainen

## Wire Rope Certificate

---

Manufacturer No.	785477/5
Job number	B3409A2
Serial number of the hoist	HKY78671
Coil/Reel number	RC6893
Rope manufacturer's reference	DN1006856 6468
Diameter (mm)	15
Length (m)	55 M
Construction	8XK26WS
Lay	LE
Tensile grade (N/mm <sup>2</sup> )	2160
Surface finish of wires	GALVANIZED
Break load (kN)	273

We do hereby certify that the particulars above are correct.

Konecranes Finland Corp.

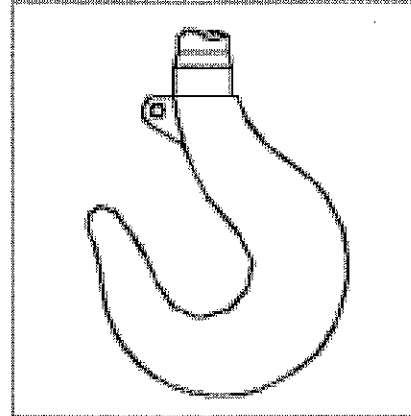
12.10.2010



Tommi Kukkurainen

## Hook Forging Certificate

Manufacturer No. 785477/5  
Job number B3409A2  
Serial number of the hoist HKY78671  
Label of the forging RSN 10T  
Forging manufacturer's reference Z0014724-1 CH  
DIN No 15401  
Hook size and type RSN 10 T



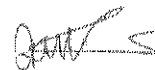
Mechanical properties

	Rc2 (N/mm2)	Av(ISO-V) (J)
Requirements	620	27
Test result	834	136

We do hereby certify that the particulars above are correct.

Konecranes Finland Corp.

12.10.2010



Tommi Kukkurainen

**Crane Data Sheet**

Crane number	B3409A2
Manufacturer No.	785477

Component	Serial number	Specification
<b>CXT60610250P65EDMAS</b> HKY78671		
Hoisting gear	70575145	GEN404NB000-D
Hoisting motor	1585576	MF13Z-106N172P85061N-IP55
<b>CXT40410050P35FDMBS</b> HKY78513		
Hoisting gear	70570973	GEN205NB000-B
CID serial no	H39256	
	021026881314	
Hoisting motor	1586728	MF10X-106N163P85003E-IP55
<b>ECN32-4099-K51746I0000-N</b>		
<b>GES572PS2BOF07XB100-5400N</b> 70574460 70574461		
<b>CRANELP6-2CC4V2-22HE</b>		
<b>QQSMD14MX0P622238E</b>		
<b>RN4-4XCU125-84M</b>		
<b>PENDAX12-2222NDV2-048P0</b>		
<b>REMOX516MI0T0TDRPCE00ST</b> 516-1019685		



## Hoist Test Certificate

### Rereferences

Manufacturer No.	785477/10	Job number	B3409A2
------------------	-----------	------------	---------

### Hoist

Type of hoist	CXT40410050P35FDMBS	Load	5000 KG
Serial number of the hoist	HKY78513	Drum load	-
Height of lift	12 M	Duty class	M5
Rope stroke	-	Total power	4.5 kW
Total current	9.9 A		

### Hoisting machinery

Hoisting motor type	MF10X-106N163P85003E-IP55		
Serial number	1586728	Power (kW)	4.5/7
Gear type	GEN205NB000-B	Hoisting speed	5/0.8 MMIN
Serial number	70570973	Rope speed	-/-

### Controls

Main voltage	415 V	Frequency	50 HZ
Control voltage	48 V	Serial number	H39256
Control type	2SP	Overload device	SG
Pendant cable	-	Adjusted load	5500 KG
Wiring diagram	785477		
Wiring standard	IEC		

### Trolley

Travelling motor type			
Serial number			
Gear type			
Serial number			
Power (kW)	/	Rail gauge	-
Trolley type	MB	Wheel groove	-
B-measure nom.	-	Inverter Serial no	
Trolley speed	-		

### Factory tests

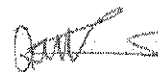
Number of starts 36  
**Test run with 100% load.**  
**Dynamic overload test, 125% load.**  
**10% under voltagetest, 100% load.**  
**Overload set at 110% load.**

### Note

Currents on motor type plate are according to ISO/FEM M5.

Konecranes Finland Corp.

05.10.2010



Tommi Kukkurainen

## Wire Rope Certificate

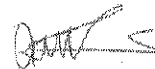
---

Manufacturer No.	785477/10
Job number	B3409A2
Serial number of the hoist	HKY78513
Coil/Reel number	RC6863
Rope manufacturer's reference	102668/281041
Diameter (mm)	8
Length (m)	55 M
Construction	8X19-PWRC(K)
Lay	LE
Tensile grade (N/mm <sup>2</sup> )	2160
Surface finish of wires	GALVANIZED
Break load (kN)	81.11

We do hereby certify that the particulars above are correct.

Konecranes Finland Corp.

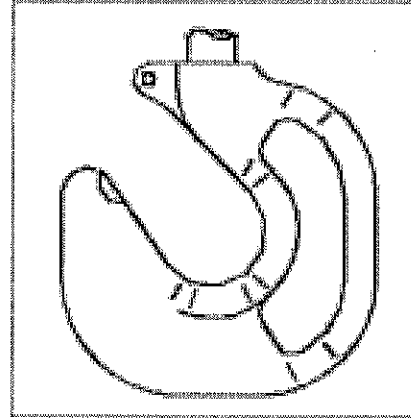
05.10.2010



Tommi Kukkurainen

## Hook Forging Certificate

Manufacturer No. 785477/10  
Job number B3409A2  
Serial number of the hoist HKY78513  
Label of the forging HBC2.5V KOS4 10-3-3  
Forging manufacturer's reference  
DIN No 15400  
Hook size and type HBC 2,5 V



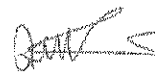
### Mechanical properties

	Rc2 (N/mm2)	Av(ISO-V) (J)
Requirements	620	27
Test result	856	120

We do hereby certify that the particulars above are correct.

Konecranes Finland Corp.

05.10.2010



Tommi Kukkurainen

**Crane Data Sheet**

Crane number <sup>2</sup>	B3409A2
Manufacturer No.	785477

Component	Serial number	Specification
CXT60610250P65EDMAS HKY78671		
CXT40410050P35FDMBS HKY78513		
CID serial no	H39256	
Hoisting gear	70570973	GEN205NB000-B
	021026881314	
Hoisting motor	1586728	MF10X-106N163P85003E-IP55
ECN32-4099-K51746I0000-N		
GES572PS2BOF07XB100-5400N 70574460 70574461		
CRANELP6-2CC4V2-22HE		
QQSMD14MX0P622238E		
RN4-4XCU125-84M		
PENDAX12-2222NDV2-048P0		
REMOX516MI0T0TDRPCE00ST 516-1019685		

**EC Declaration of Conformity**  
(Machinery Directive 2006/42/EC, Annex II, sub. A)

**Herewith we:** Konecranes UK Ltd.

**Address:** 2 Peel Park Place, College Milton,  
East Kilbride, Glasgow, G74 5LR

**Declare under our sole responsibility that the:**

**25/5 Tonne CXT Double Girder Crane (B3409A2)**

**Is in conformity with Machinery Directive 2006/42/EC, EMC Directive 2004/108/EC and Low Voltage Directive 2006/95/EC.**

**Is manufactured according to the following harmonised standards:  
EN ISO 12100-1, EN ISO 12100-2, EN563, EN1050, EN12077-2, EN12644-1,  
EN12644-2, EN13135-1, EN13557 and EN60204-32.**

**Is manufactured according to the following international standards and specifications: ISO 7752, ISO 10245-5, IEC 61340-5-1, FEM 1.001 / 4, FEM9.901 and according to the Technical Specifications of the particular project.**

**It is ensured through internal measures and ISO 9001 Quality System that the product conforms to the requirements of the current Directives and the relevant standards.**

  
Michael Casey  
Quality Assurance Department

**Konecranes UK Ltd.**

**Glasgow – 2 December 2010**

\_\_\_\_\_  
Company

\_\_\_\_\_  
Place and Date of Issue



## Hoist Test Certificate

### Rereferences

Manufacturer No.	785477/5	Job number	B3409A2
------------------	----------	------------	---------

### Hoist

Type of hoist	CXT60610250P65EDMAS		
Serial number of the hoist	HKY78671	Load	25000 KG
Height of lift	7 M	Drum load	-
Rope stroke	-	Duty class	M5
Total current	32 A	Total power	15 kW

### Hoisting machinery

Hoisting motor type	MF13Z-106N172P85061N-IP55		
Serial number	1585576	Power (kW)	15/2.5
Gear type	GEN404NB000-D	Hoisting speed	2.5/0.42 MMIN
Serial number	70575145	Rope speed	-/-

### Controls

Main voltage	415 V	Frequency	50 HZ
Control voltage	48 V	Serial number	
Control type	2SP	Overload device	SG
Pendant cable	-	Adjusted load	27500 KG
Wiring diagram			
Wiring standard	IEC		

### Trolley

Travelling motor type			
Serial number			
Gear type			
Serial number			
Power (kW)	1.1/	Rail gauge	2000 MM
Trolley type	MA	Wheel groove	65 MM
B-measure nom.	-	Inverter Serial no	
Trolley speed	20 MMIN		

### Factory tests

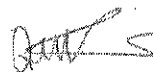
Number of starts 22  
**Test run with 100% load.**  
**Dynamic overload test, 125% load.**  
**10% under voltage test, 100% load.**  
**Overload set at 110% load.**

### Note

Currents on motor type plate are according to ISO/FEM M5.

Konecranes Finland Corp.

12.10.2010



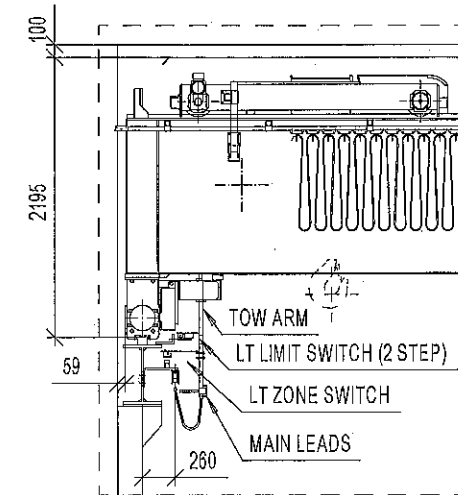
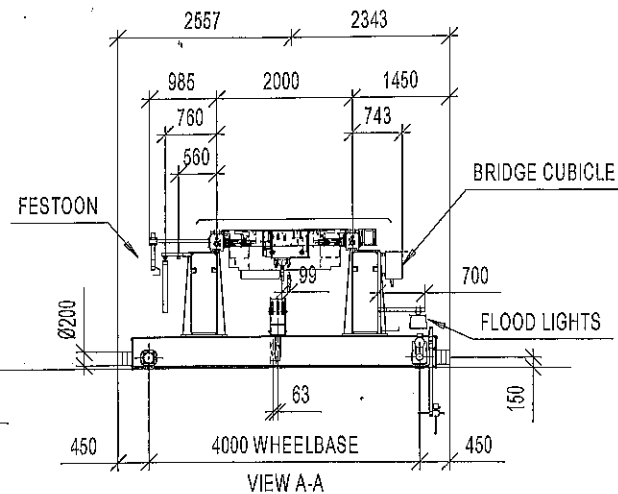
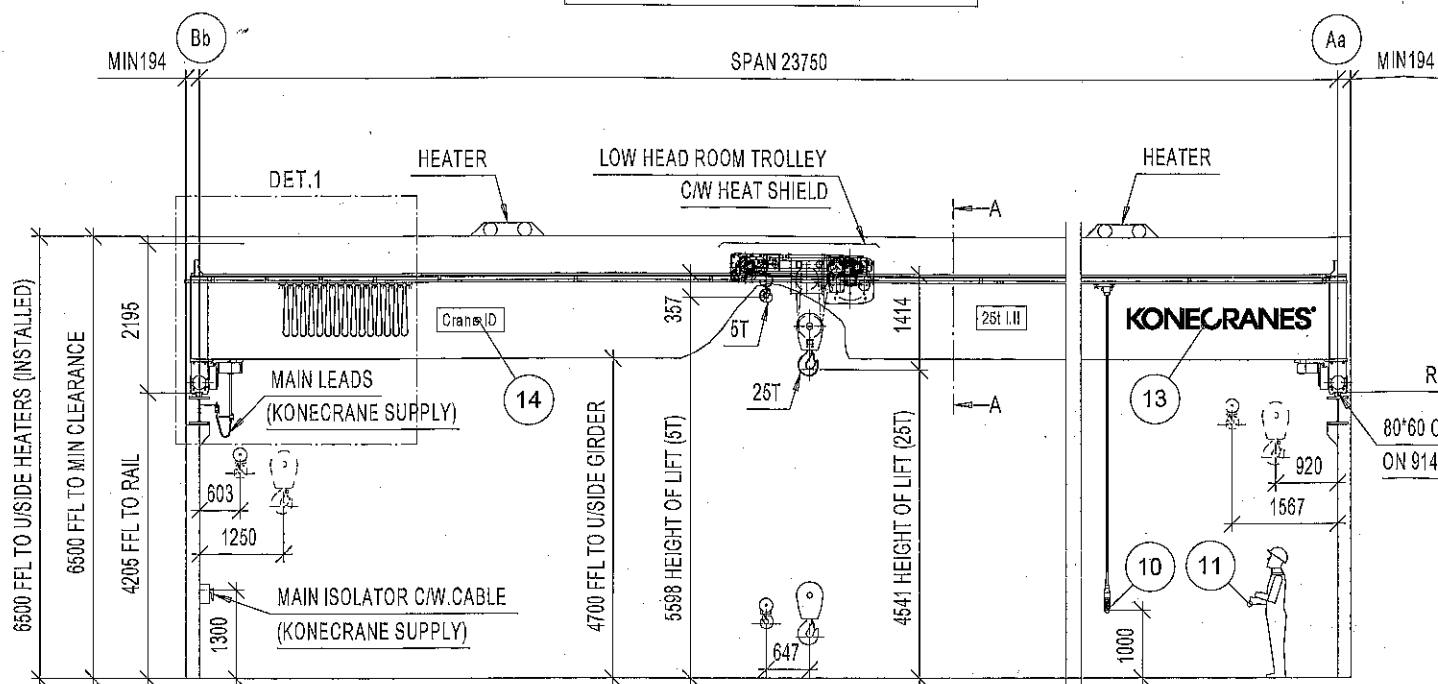
Tommi Kukkurainen

NOTE; GANTRY RAIL TOLERANCES TO BE IN ACCORDANCE WITH BS466:1984, APPENDIX F

STICKER SET REQUIRED TO INDICATE ZONE LIMITS;  
1 SET TO U/SIDE CRANE GIRDER.  
1 SET TO GANTRY BEAM (GRID Bb).

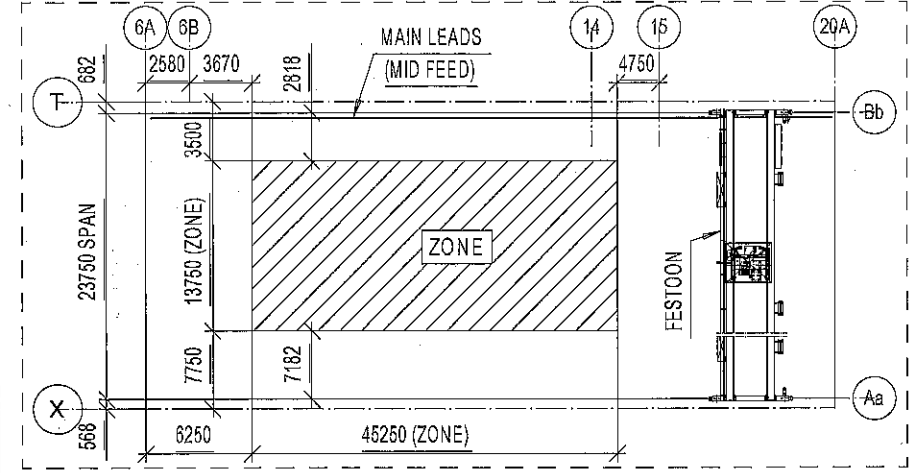


Rev	Description	Date	Revised by
A	FIRST ISSUE	2010-08-04	M. SEALEY
B	HOIST DESIGN CONFIRMED	2010-09-01	M. SEALEY
C	HEATER HEIGHT CONFIRMED BY CLIENT AT 6500MM	2010-09-22	M. SEALEY
D	RECOMMENDED HEATER CLEARANCE REMOVED	2010-10-19	M. SEALEY
E	ZONE ADDED	2010-11-25	M. SEALEY



**SURFACE TREATMENT OF CRANE**  
BRIDGE COLOR : RAL1028  
PAINT : E/180  
CRANE TOLERANCES ACC. TO DRAWING CST00A1  
RUNWAY TOLERANCES ACC. TO DIN4132  
CUSTOMER ORGANIZES SAFE PLATFORM FOR CRANE SERVICE  
INDOOR USE CRANE 5°...40°C  
RADIO CONTROLLED CRANE  
PENDANT AS BACKUP

**TECHNICAL DATA**  
SPAN : 23.75 m  
LOAD : 25000 kg / 5000 kg  
CRANE CAPACITY : 25t LIL  
LIFTING HEIGHT (25T) : 4.541 m (7 m available)  
LIFTING HEIGHT (5T) : 5.598 m (12 m available)  
HOISTING SPEED (25T) : 2.6/0.42 m/min 2-speed  
HOISTING MOTOR (25T) : 1 x MF13Z-106 - 16/2.5 kW - 60% ED  
HOISTING SPEED AUX (5T) : 5/0.8 m/min 2-speed  
HOISTING MOTOR AUX (5T) : 1 x MF10X-106 - 4.5/0.7 kW - 60% ED  
TRAVERSING SPEED : 20 m/min stepless  
TRAVERSING MOTOR : 2 x MF06LB200 - 1.1 kW - 40% ED  
TRAVELLING SPEED : 63 m/min stepless  
BRIDGE MOTOR : 2 x MF07XB100 - 3 kW - 40% ED  
WEIGHT OF TROLLEY : 2850 kg  
WEIGHT OF BRIDGE : 14800 kg  
MAIN CONTROL VOLTAGE : 415 / 48 V; 50 Hz  
CRANE GROUP : A4  
HOIST GROUP : FEM M5 (2m)  
HOIST GROUP AUX : FEM M5 (2m)  
CRANE DRIVE GROUP : FEM M5 (2m)  
SUPPLY POWER : 23.2 kW  
LENGTH OF RUNWAY : 88.67 m



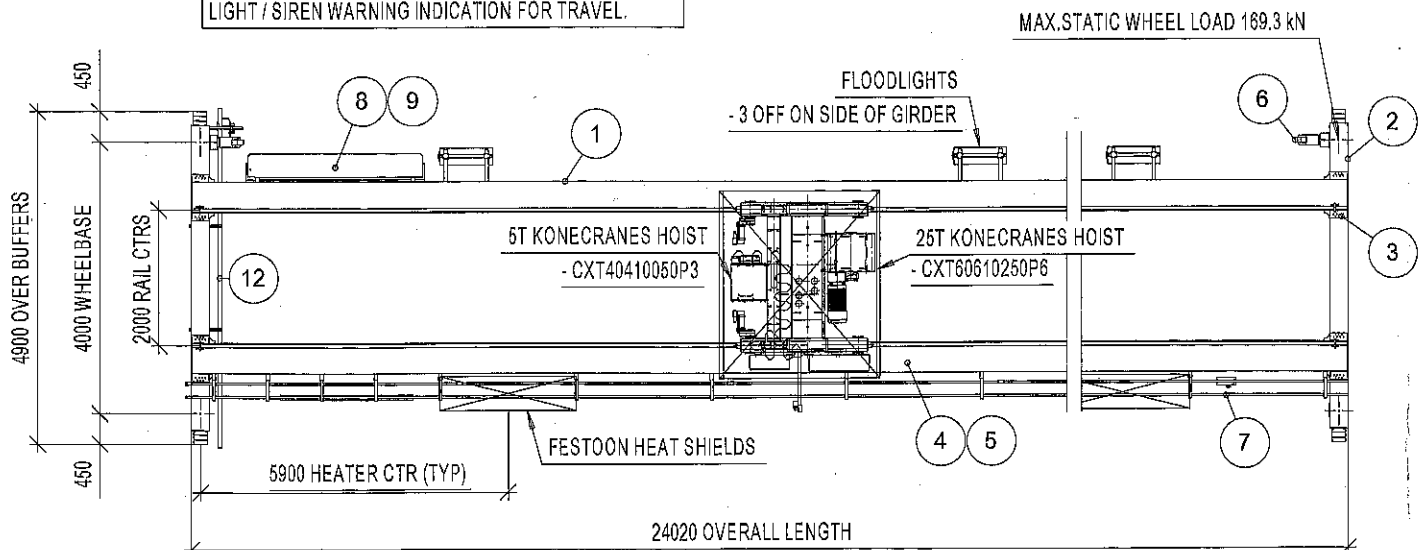
Pos	Qty	Description	Specification	Weight kg/pcs
15	1	DIRECTIONS LAB	DIN 1	
14	1	NUMBER LABEL	-----	
13	2	SUPPLIER LABEL	-----	
12	1	CRANE SUPPLY	RN4-4xCu125-84mUH500	
11	1	REMOTE CONTROL	REMOX516M10T0TDRPCE00ST	
10	1	PENDANT	PENDAX12-2222NDV2-048P0	
9	1	CRANE DRIVE CO	DYNAC2C011FPXXB0N0L	
8	1	ELECTRICS PANE	CRANELP6-2CC4V2-22HE	
7	1	HOIST SUPPLY	QQSMD14MX0P622238E	
6	2	CRANE DRIVE	GES572PS2BOF07XB100-5400N	
5	1	HOIST DRIVE CO	DYNAC2C002FPXXB0N0L	
4	1	HOIST	CXT60610250P6 / CXT40410050P3	
3	2	JOINT	B-TOP-K -STD-S	
2	2	END CARRIAGE	ECN32-4099-K51746I0000-N	
1	2	MAIN GIRDER	Low Crab 25t / 5t x 24m Span-B	

Appd	Date	Project	Department	Size
	2010-08-04	B3409A2	KCB	A2
Check	Title			Scale
M. SEALEY	25/5T DG CXTD CRANE			1 : 75
Drawn	Description			Rev
M. SEALEY	CLEARANCE DRAWING			
KONECRANES				E
INTERSERVE PROJECT SERVICES LT				
Drawing no. 3409A2-CD				

15 MAIN LEADS - RC4 125AMP KONEDUCTOR - LINE FEED MOUNTED TO WEB OF GANTRY BEAM ISOLATOR AND RISER CABLE INCLUDED

ALL SPEED TOLERANCES WITH WORKING LOAD ±10%  
NOTE; TROLLEY NOT TO BE PARKED AND LEFT UNDER HEATERS. (HEATING SYSTEM INSALLED AT 6500MM FROM FFL.)

NOTE; ZONE ADDED - HIGH LEVEL MACHINERY BELOW. ZONE LIMITS TO BE MARKED ON BRIDGE AND GANTRY. SPEEDS WITHIN ZONE:  
CRANE BRIDGE TRAVEL SLOWS TO 30%. (ADJUSTABLE)  
TROLLEY TRAVEL SLOWS TO 25%. (ADJUSTABLE)  
LIGHT / SIREN WARNING INDICATION FOR TRAVEL.



INTERSERVE

JOB NOS. B3409A2

This document and the information contained herein, is the exclusive property of Konecranes Plc and represents a non-public, confidential and proprietary trade secret that may not be reproduced, disclosed to third parties, altered or otherwise employed in any manner whatsoever without the express written consent of Konecranes Plc or Konecranes (UK) Ltd. Copyright © 2010 Konecranes Plc. All rights reserved.