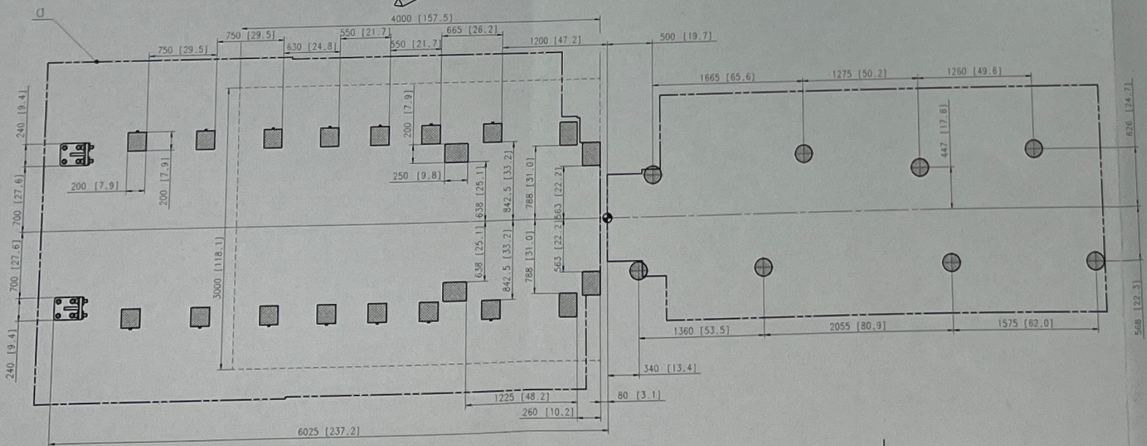
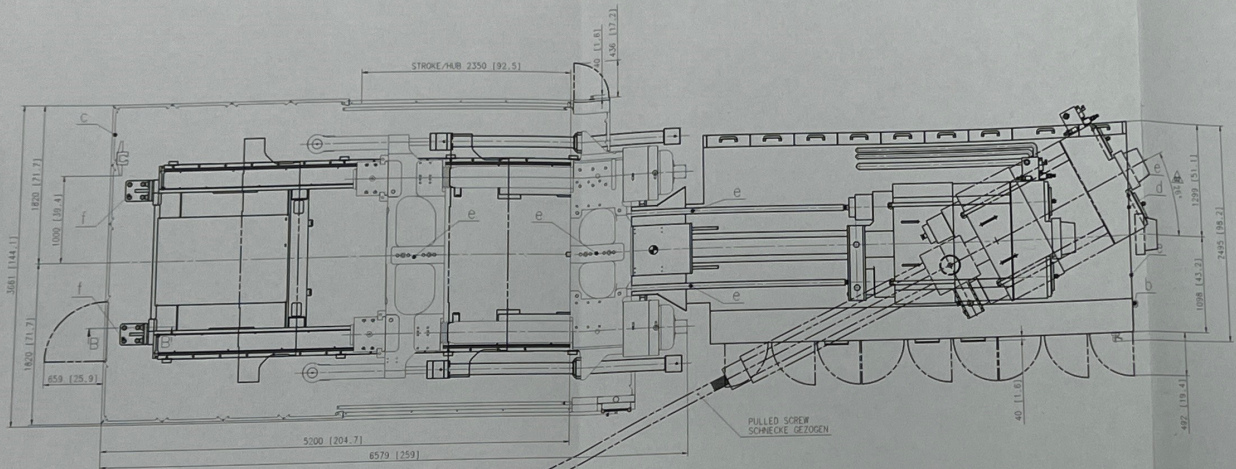
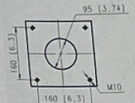


**ACHTUNG**  
 MASCHINENTEIL FAHRT AUS.  
 SICHERHEITSABSTÄNDE EINHALTEN  
 MIN. 500mm

**ATTENTION**  
 MACHINE PART MOVES OUT.  
 OBSERVE SAFETY DISTANCES  
 MIN. 500mm

TYPE	WASSELZYLINDER SCHNECKEN P SCHN. DIAMETER	X ÜBERSTAND AGG. OVERSIZE INJ.	MASCHINENGEWICHT OHNE ÖL MACHINE WEIGHT WITHOUT OIL	
			SCHÄLPERSEITE CLAMP UNIT	SPRITZPERSEITE INJECTION UNIT
DUO 7050/1300-1500 DUO 7050/1400-1650US	L/022	90	-	-
		105	-	-
		120	54 000 kg 119 050 lb	17 000 kg 37 480 lb
	L/025	90	-	-
	105	-	-	
	120	231 (9.1)	-	-
	105	-	-	-
DUO 11050/1300-1500 DUO 11050/1400-1650US	L/022	120	-	-
		135	54 000 kg 119 050 lb	18 000 kg 39 690 lb
		150	328 (12.9)	-
	L/025	105	-	-
	120	321 (12.6)	-	-
	135	733 (28.9)	-	-

A-A (1:5)



- d UMRISS MASCHINE  
CONTOUR-MACHINE
- b ELEKTROANSCHLUSS  
MAIN CONNECTION
- c KUEHLWASSER ZULAUF-ABLAUF 4x 1"  
COOLING WATER INLET-OUTLET 4x 1"
- d OELKUEHLER ZULAUF-ABLAUF 1 1/2"  
OIL COOLER INLET-OUTLET 1 1/2"
- e TRANSPORTVORRICHTUNG  
TRANSPORT-DEVICE
- f BODENVERANKERUNG  
FIXED TO THE GROUND (SCREW)

NOTICE - DIMENSIONS SHOWN IN PARENTHESES REPRESENT  
 METRIC VALUES CONVERTED INTO DECIMAL INCHES  
 HINWEIS - IN KLAMMER GESETZTE WERTE REPRESENTIEREN  
 DIE IN DEZIMALE INCH UMGERECHNETEN MASSANGABEN

FOUNDATION L. DUO 7050-1400US FAMOX25\_2  
 FUNDAMENTPLAN DUO 7050-1300 FAMOX25\_2

1857-901-23-10-013

DATE: 2014-04-22

ENGEL